

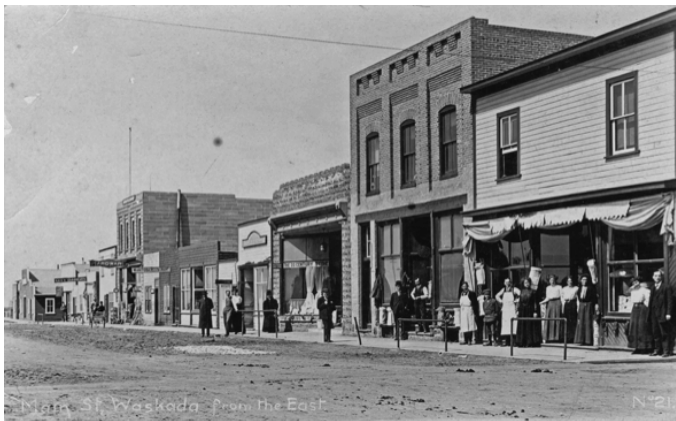
Waskada

A Post Office named Waskada was opened in 1883 a few kilometres south of where the town is today.

When it was confirmed in 1899 that a rail line was coming nearby and that a new town to be was being surveyed they decided to keep the name.

Until this time businesses such as stores, post offices, blacksmith shops and gristmills were operated on the individual properties of homesteaders. The railway brought the creation of towns, and towns then became the most logical place to do business.

When Charles Sankey arrived in Waskada in the fall of October 1899, the townsite was bare prairie. Sankey was a dedicated community worker, and in fact appointed by the municipality to look after general public interests in the town.



Waskada quickly became the commercial centre for the region.

On a walk south of the townsite one day, a vision presented itself to Sankey: a recreational park, surrounded by trees, with space for sports activities and community events. From this initial dream, a combination of hard work, determination

and good luck accident brought the Waskada Park into being.



The Waskada Park in 1946, looking southwest.

Over the next two years funds were being gathered for the purchase of trees. In the meantime Chambers planted potatoes and other vegetables in the strips of land. He did an excellent job, and left the soil in good condition for receiving trees.



The first version of the blacksmith shop, now featured in the Waskada Museum is visible on the left side of this photo from around 1909