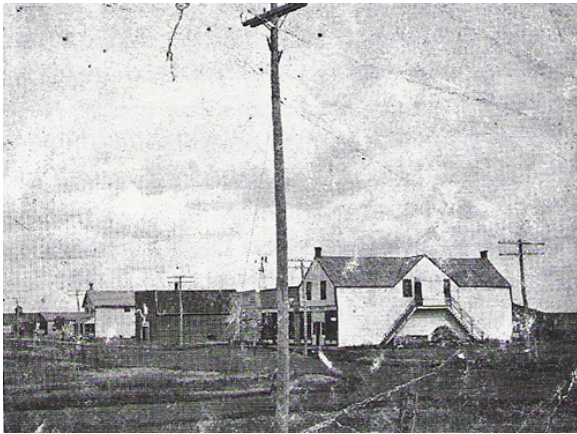


Whitewater Village

In 1886, the new CPR line bypassed the established community of Waubeesh and created the new village of Whitewater.

The boxcar railroad station that had been established to service Waubeesh became the beginning of Whitewater village. Pioneer businessman George Morton built an elevator in 1888 along with a large general store and boarding house, using lumber cut by the Lake Max Sawmill.



The elevator was the first of five that came to spring up in the town, making Whitewater a very important grain-handling centre.



Until 1894, the children of Whitewater attended Mountainside School, which was about 7.5 km to the south. In 1894 a schoolroom was set up above the general store in Whitewater. Petersburg

School was built the following spring at the south end of the community.



The train pulls into Whitewater Station.

A brickyard started up in the late 1880s about a mile northeast of Whitewater which employed between 30 and 40 men. The bricks made from Whitewater Lake clay were of very high quality, and they were used for many buildings in the nearby town, including the Petersburg School.



By the early 1900s the village had a butcher shop, harness-making shop, livery, carpenter, and draftsman. There was also an open-air skating rink complete with a warm-up shack. Rail service was provided regularly by the CPR, with daily passenger and mail traffic.